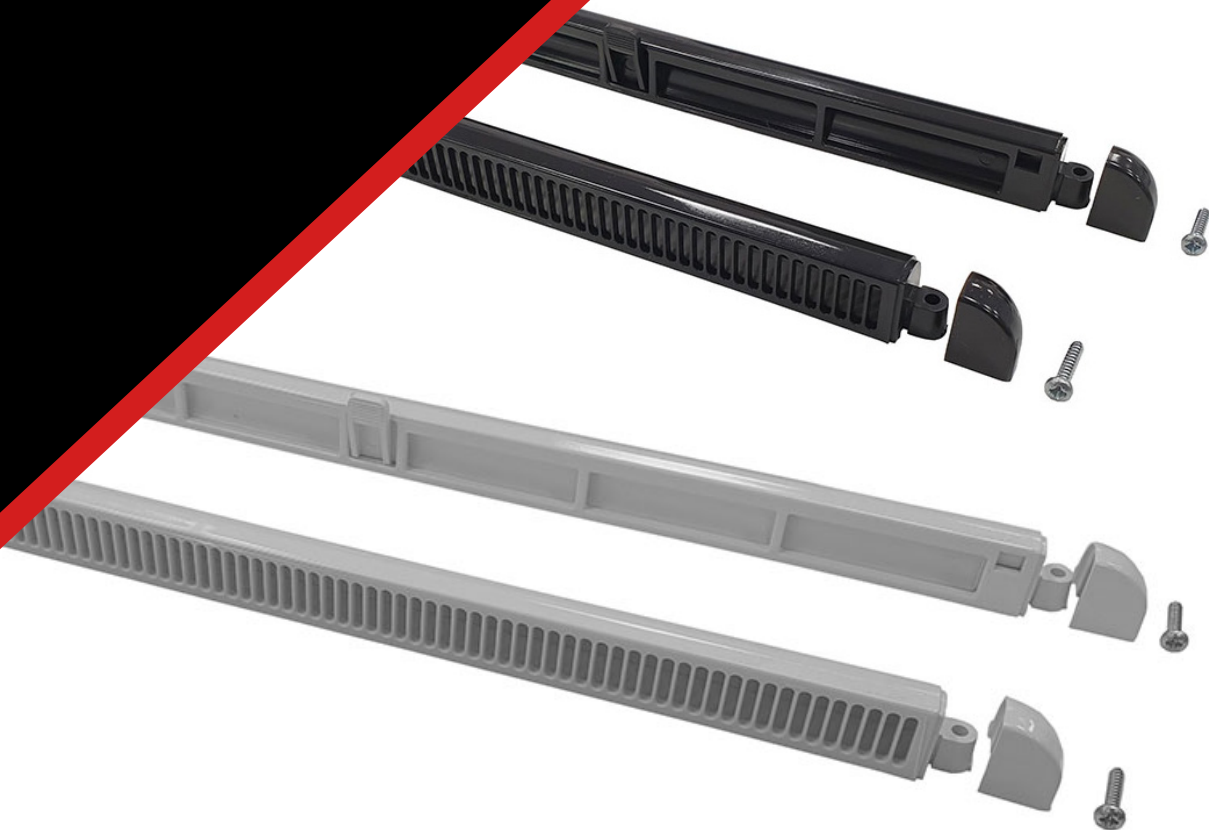


Product Data Sheet

Framevent PVCu Ventilators

Revision 2 - 2nd August 2023



Framevent PVCu Ventilators

Trickle Vent

- Available in two sizes 300mm and 400mm.
- A smooth, rounded design.
- Snap on, quick fit ends.
- Positive open and close action.
- Integral flyscreen in external hood.
- Tested in accordance with BS EN 1026:2016 & BS EN 1027: 2016 Weather performance.
- Rod control available- for full compliance with Approved Document K 2013.
- Can be fitted to give updraught or down-draught.
- Sleeves available - for full compliance with BS7412: 2007 & BS EN 14351-1:2006.
- Joiner pieces available.



Various colours



Trickle Vents Framevent PVCu Ventilators 300mm



Trickle Vents Framevent PVCu Ventilators 400mm

Product Description

Manufactured in the highest quality U.V stabilised PVCu, the Framevent PVCu has been specifically designed for the volume market. Durable, easy to fit and fully tested, it is ideal for both timber and PVCu frames and its slim, elegant design makes it a popular choice. The Framevent represents the new generation of trickle vent window fittings. The Framevent PVCu 300mm units has an equivalent area as per BS 13141-1:2019 – 2328mm² and the 400mm units has an equivalent area as per BS 13141-1:2019 – 3180mm².



Fixing Instructions

- Route out the Frame with the correct slot size & configuration for the model to be fitted.
- Place unit centrally over the slots.
- Fix unit in place by using screws provided.
- Screw hole centres are 10mm in from each end (20mm off the overall length).

Performance

- Independently tested to BS EN 13141-1:2019.
- Water tightness of 400pa.
- Independently acoustically tested in accordance with BS EN 20140-10:1992, ISO 140-10:1991.

Maintenance

- The Framevent can be cleaned using a damp cloth. The external hood should be brushed lightly to remove dust from the flyscreen area.
- *Airflow rates quoted are for when fitted in accordance with manufacturer's instructions. We recommend silicone sealing vents for best results*.

Product Information

Framevent PVCu 300

- Available in White, Brown, Black and Anthracite Grey measurement of Framevent PVCu seen below:
- 300mm Length x 22mm wide. Equivalent area as per BS 13141-1:2019 – 2328mm².
- Slot Size – 260x13mm.

Framevent PVCu 400

- Available in White, Brown, Black and Anthracite Grey measurement of Framevent PVCu seen below:
- 400mm Length x 22mm wide. Equivalent area as per BS 13141-1:2019 – 3180mm².
- Slot Size – 365x13mm.

Product Availability

Product Code	Product Description	Colour	Size
ADFV300W	Framevent PVCu	White	300mm
ADFV300BLK	Framevent PVCu	Black	300mm
ADFV300B	Framevent PVCu	Brown	300mm
ADFV300ANT	Framevent PVCu	Anthracite Grey	300mm
ADFV400W	Framevent PVCu	White	400mm
ADFV400BLK	Framevent PVCu	Black	400mm
ADFV400B	Framevent PVCu	Brown	400mm
ADFV400ANT	Framevent PVCu	Anthracite Grey	400mm

To Order & Specify

Please contact us and quote the following information - Quantity / Product Description / Product Code / Colour / Size
Typical wording - 15 | Framevent PVCu | ADFV300W | White | 300mm

>> Tel: [01329 844 500](tel:01329844500) or >> Email: sales@astroflame.com

Installation

For further information on installation requirements please contact the technical team on: tel [01329 844 500](tel:01329844500)
or email sales@astroflame.com

Health and Safety

The product does not present any known health hazards during or after installation. Normal good industrial and personal hygiene practices should be observed.

As part of our policy of ongoing improvements, we reserve the right to modify, alter or change product specifications without giving notice. Product illustrations are representations only. All information contained in this document is provided for guidance only, and as ASTROFLAME FIRESEALS LTD has no control over the installation methods of the products, or of the prevailing site conditions, no warranties expressed or implied are intended to be given as to the actual performance of the products mentioned or referred to, and no liability whatsoever will be accepted for any loss, damage or injury arising from the use of the information given of products mentioned or referred to herein.

The above information to the best of our knowledge is true and accurate and based upon current test data and is supplied for your guidance only. Customers should satisfy themselves to the suitability of the product in its intended use and no guarantee is given or implied since the conditions of actual use are beyond our control. ASTROflame (Fireseals) Ltd, disclaim any liability for loss, damage or other expense arising from the use of information, data or products mentioned or referred to and reserve the right to change any details or specifications without notice.